

VF204 A1 External Sign  
(galvanised steel backing)



1 Open out the A-sign frame to form a stable shape



2 Push down on the central locking bars



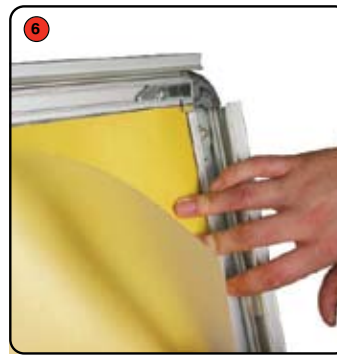
3 Open out the spring loaded frame sides



4 Remove the clear protective sheet



5 Place the graphic into the frame



6 Re-fit the protective sheet and close the frame sides to secure (step 3 but reversed)

hardware specifications	graphic specifications	additional info
<p>Assembled dimensions (mm) 1060 (h) x 638 (w) x 825 (d)</p> <p>Closed dimensions (mm) 1120 (h) x 638 (w) x 60 (d)</p> <p>Weight: 11kg - External A-sign</p>	<p>Maximum Graphic Dimensions (mm): 841 (h) x 594 (w) [A1 Portrait]</p> <p>Visible Graphic Dimensions (mm): 831 (h) x 584 (w)</p> <p>Substrate: 1mm thick maximum For External A-sign encapsulate graphic or use suitable substrates for outdoor use</p>	<p>Availability: Aluminium frame with Anodised silver finish</p>

We are continually improving and modifying our product range and reserve the right to vary the specifications without prior notice. All dimensions and weights quoted are approximate and we accept no responsibility for variance. E&OE.