

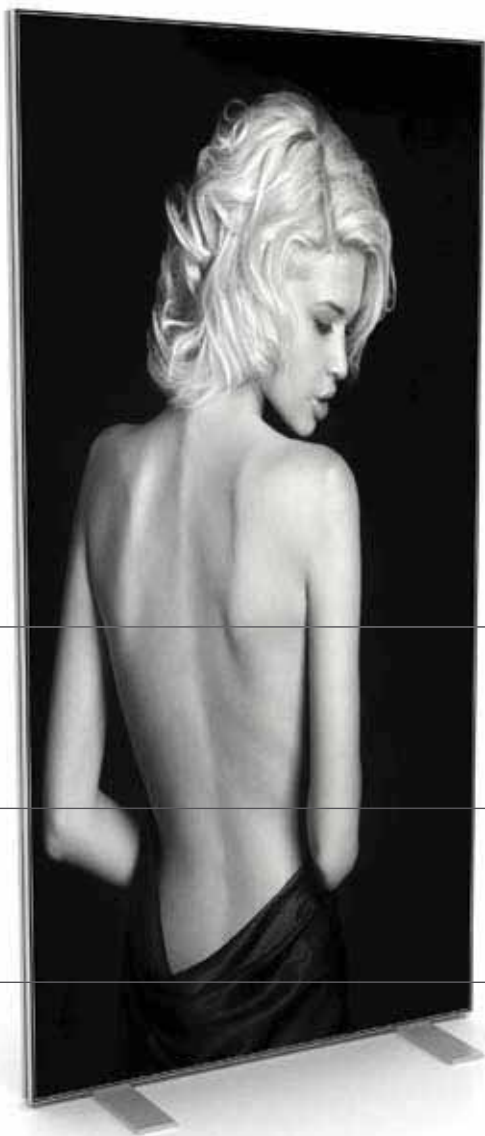


//tfs

tension fabric system

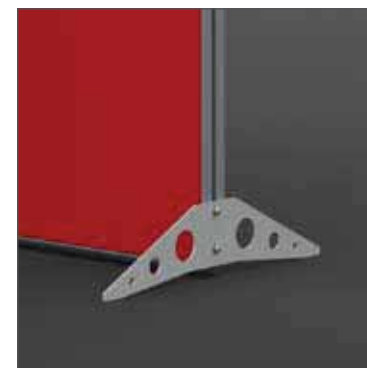
//tension fabric system

Unibox TFS allows simple fitting and removal of tension fabric graphics. Frames are simple to assemble using just one tool.



Range of freestanding flat display panels in various standard sizes or bespoke. Integral system channel allows easy attachment of accessories

Freestanding double sided frame with slimline rectangular feet or optional side mounted feet.



//tension fabric system

portable

easy assembly

expandable



Curved 2x2 metre double sided frame.



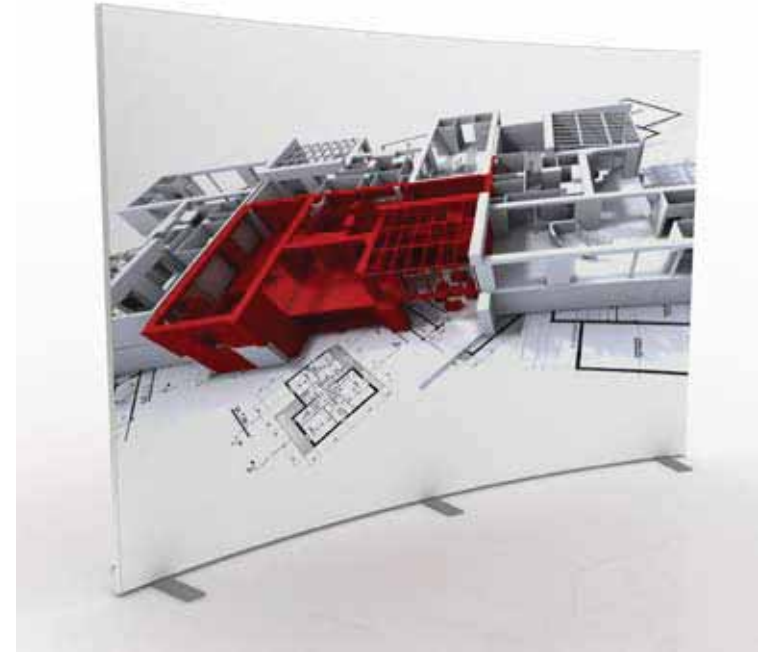
Connecting frames together to make a seamless graphic exhibition wall structure with 4 metre totem. Numerous configurations are possible.



//tension fabric system

showrooms
exhibitions
reception and foyer areas
roadshow events
museum graphics
interiors

//tension fabric system



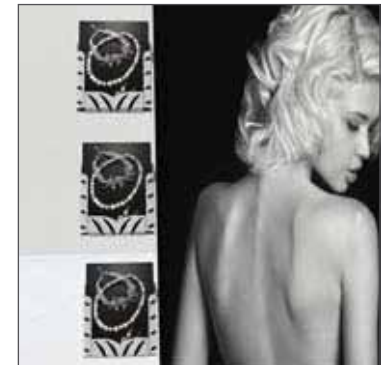
Range of freestanding curved display panels in various standard sizes or bespoke.

portable

easy assembly

expandable

Integral system channel allows easy attachment of accessories



portable

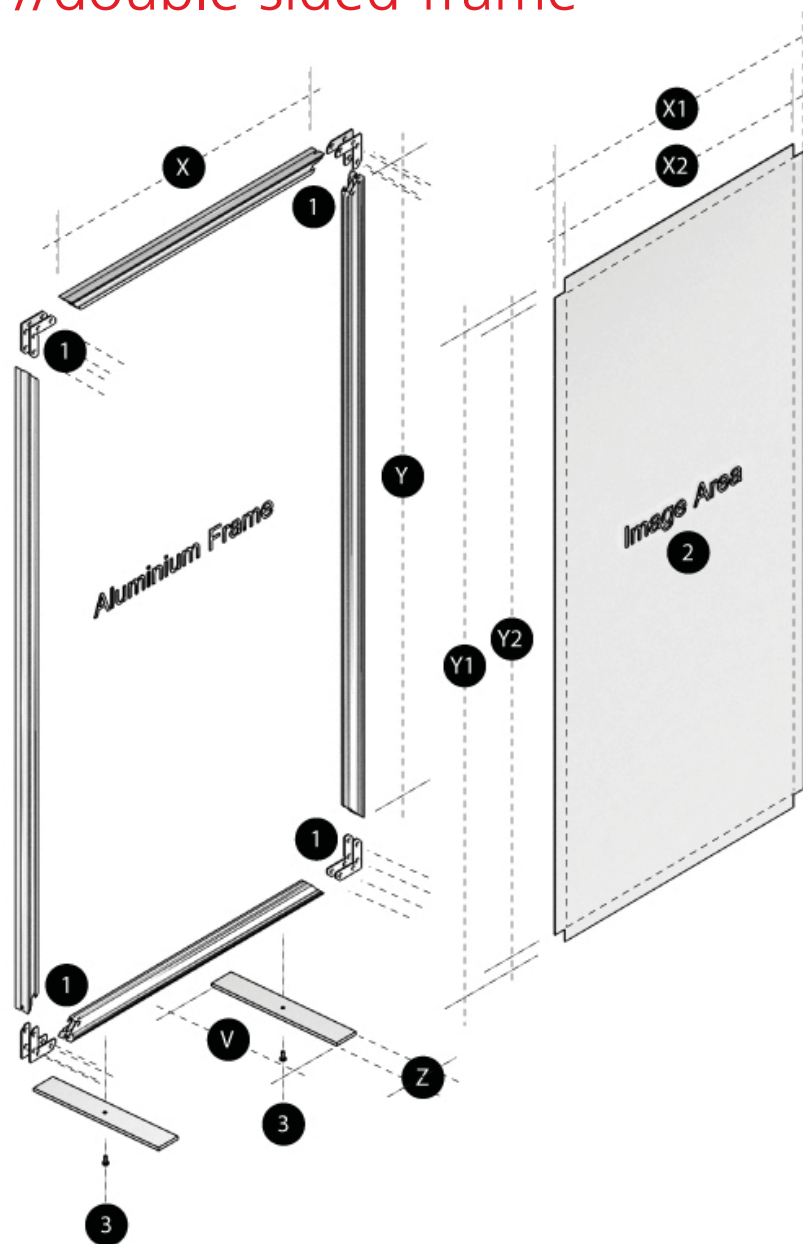
easy assembly

expandable



Wall mosaic utilising wall hung single sided profile UA10169

//double sided frame



1. Connect aluminium frame together using corner brackets [2 per corner for double sided].
2. Fabric has silicone strips sewed into edge which is pushed into facing channel on aluminium frame.
3. Screw feet into frame using M8 countersunk screws into roll nuts.



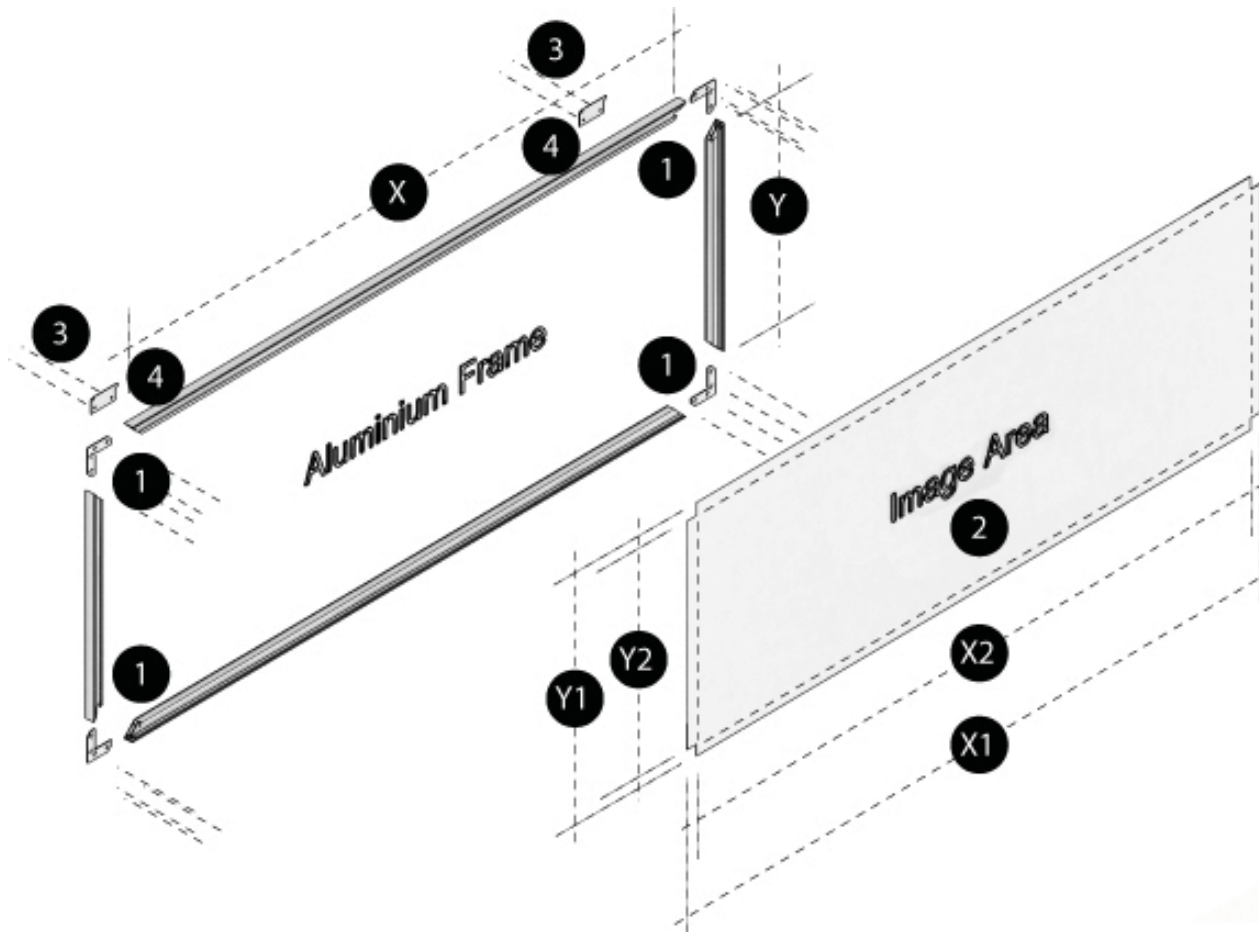
//double sided frame

portable

easy assembly

expandable

//single sided frame



1. Connect aluminium frame together using corner brackets [1 per corner for single sided].

2. Fabric has silicone strips sewed into edge which is pushed into facing channel on aluminium frame.

3. Screw brackets into wall

4. Hang frame over bracket flange at an angle and then flatten once located in channel



//fabric insertion

Step 1

Insert the fabric by pushing the silicone strip into the channel of the extrusion. The fabric has a tab to allow for easy extraction.

Step 2

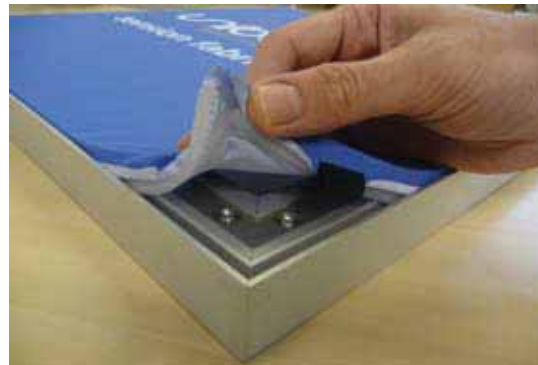
Once all the silicone strip has been placed into the channels of the extrusion frame, smooth out any wrinkles with your hand.

Step 3

The fabric is now ready for show.

how it works

//easy to assemble





//tension fabric system

ELECTRO-TECH COLOUR LTD
1 Blenheim Court,
62 Brewery Road
London
N7 9NY

t: +44 (0) 20 7636 6677
f: +44 (0) 20 7636 5566
e: info@etcltd.co.uk
w: www.etcltd.co.uk