

The iPad Quad display offers a space saving solution to create four information stations. Ideal for almost any reception situation, from event and showroom use to visitor centres and offices. This simple unit can be used to service two people at the same time.

Ideal for the following environments

- Retail display
- Simple freestanding information stations
- Product launches
- Product promotion
- Showroom product support

Features & Benefits

- Single post, base and support arm with 4 x versatile iPad holders
- Continuous iPad power supply when connected to UK mains
- USB charging cable concealed within enclosure behind iPad before exiting through centre hole



Hardware Specifications	Graphic Specifications	Additional Information
<p>Support arm height: 1039mm</p> <p>Maximum Overall Dimensions: 612(w) x 612(d) x 1365mm(h)</p> <p>Weight: 17kg (carton) or 26kg (case)</p>	N/A	<p>Options: Holds iPad 2, 3, 4 iPad Air conversion available</p>

Assembly instructions



WARNING – large base plate is heavy (7.5kg).

Carefully position base plate over 8-way post and align 4 off fixing holes to threads of post (ensuring the countersunk holes are uppermost). Insert and tighten 4 off base plate screws to secure.



Carefully lay assembled base and post horizontally on floor.

NB – If you are **not using cable management** for charging, please carefully stand base and post upright and **proceed to stage 6**.



Feed figure 8 heads of both "Y" power leads through base until they protrude from top of post



Stand base and post upright ensuring lead is kept clear of foot pads.

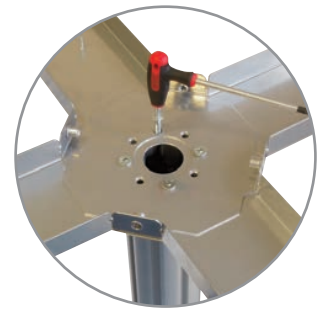


Feed figure 8 heads of power leads through central hole of bottom support plate and carefully place plate onto post. Align 4 holes to threads inside post at desired display angle.



Insert and tighten 4 off base plate screws to secure.

NB – If you are **not using cable management** for charging, please carefully place bottom support plate onto post. Align 4 holes to threads inside post at desired display angle. Insert and tighten 4 off base plate screws to secure and **proceed to stage 8**.

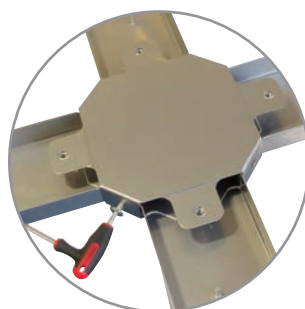


Plug one figure 8 head into a USB Power Adapter (supplied with Apple iPad) and position into retaining pins. Repeat for remaining power leads and adapters.



Carefully position and lower octagonal centre cover onto bottom support plate. Align two side holes of cover to any thread fixings of bottom support plate. Insert and tighten two hex socket screws to secure octagonal centre cover.

If you are **not using cable management** for charging, please **proceed to stage 13**.



Unlock each iPad enclosure by inserting key into security lock and rotate 'QUARTER TURN ONLY' clockwise or counter-clockwise through 90 degrees, which releases the locking pin. Return key back to original position to remove.

Assembly instructions



10 Lift fascia out of enclosures. Insert cables (supplied with Apple iPad) into all holders, allowing 10cm to remain "free" at charge/sync connector end by gently pressing into retaining moulding.



11 Feed USB end of charge/ sync cables through middle of enclosures, below pin, so they protrude from bottom of support columns.



12 Plug one cable into USB Power Adapter.



13 Carefully position and slide top support plate onto end of bottom support plate, ensuring the internal cables do not interfere with this assembly.

Repeat stages 12 and 13 for remaining iPad holders.

NB – If you are **not using cable management** for charging, carefully position and slide top support plate onto end of bottom support plate. Repeat for remaining iPad holders.



14 Depress all lock buttons on underside of bottom support plate and insert and tighten remaining four hex socket screws to secure plates. Please gently lift end of bottom support plate, if required, to allow hole in top support plate to align to thread fixing in octagonal centre cover.



15 Plug charge/sync cable into one iPad and place inside enclosure, gently press all four corners of iPad down into mouldings to hold. Repeat for remaining iPads.

NB – If you are **not using cable management** for charging, unlock each iPad enclosure by inserting key into security lock and rotate 'QUARTER TURN ONLY' clockwise or counterclockwise through 90 degrees which releases the locking pin. Return key back to original position to remove. Lift fascia out of enclosures, and place each iPad inside, gently pressing all four corners down into mouldings to hold.



16 Replace all fascias and depress lock buttons to secure enclosures.