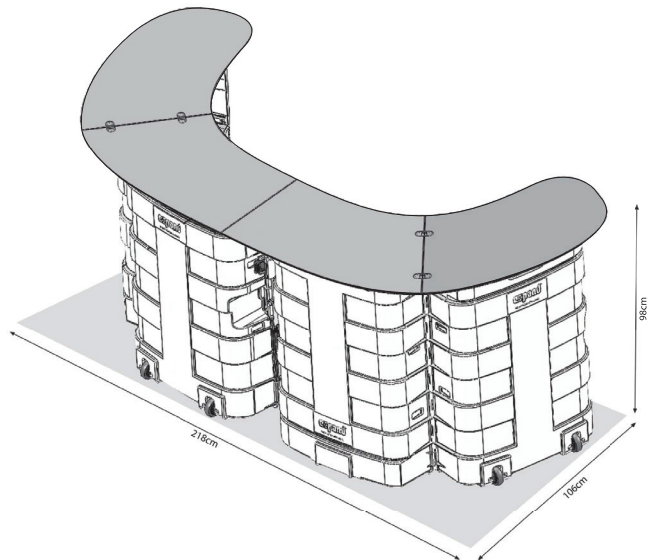


This spacious XL Counter is perfect for product demos, events, exhibitions and as a portable bar. Open the two boxes and add a large table top, a graphic on the front and shelves on the inside. Your counter is ready!



Features & Benefits

- Almost 2.2m wide
- Large graphic area for your message
- Storage inside with 8 detachable internal shelves
- Equipped with wheels for easy transportation
- Matt white or a black weighted base



| Hardware Specifications | Graphic Specifications | Additional Information |
|-----------------------------------------------------------------------------------------------------------------------------------------------------------------------------------------------------------|-------------------------------------------------|--------------------------------------------------------------------------------------------------------------------|
| <p>Overall Dimensions: 2180mm (w) x 980mm (h) x 1060mm (d)</p> <p>Weight: XL Counter Case x 2: 20 kg 8 shelves: 6.8 kg Large table top (two pieces) incl. bags: 16.4 kg</p> | <p>Please contact us for a graphic template</p> | <p>Unique features: Spacious black counter top Detachable shelves Massive area for branding</p> |

Assembly instructions

